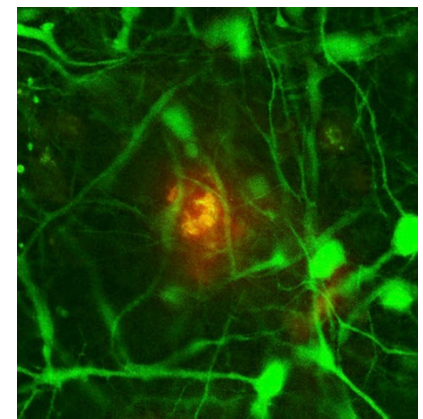
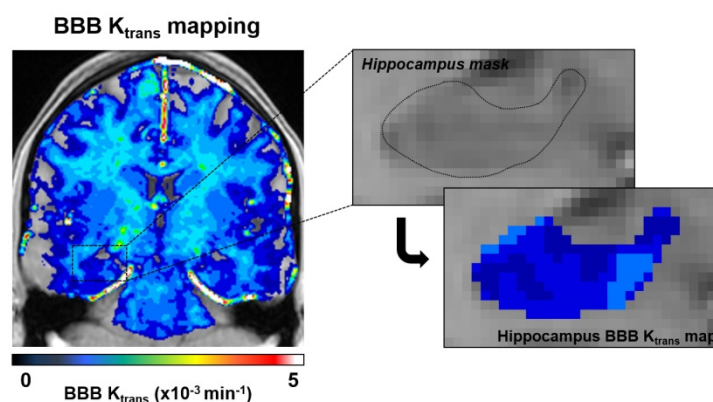
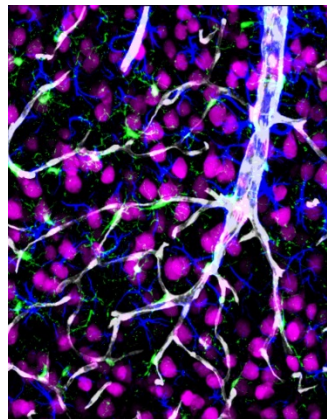


# 3<sup>rd</sup> Annual Zilkha Symposium on Alzheimer Disease & Related Disorders

Organized by Berislav V. Zlokovic, David M. Holtzman, and Rudolph Tanzi

## “BENCH TO BEDSIDE AND BEYOND: RELATING DISCOVERY RESEARCH TO TRANSLATIONAL DEVELOPMENTS AND CLINICAL EFFORTS”



**Friday, April 15, 2016**

9:00 AM – 6:00 PM

**Zilkha Neurogenetic Institute**  
Herklotz Seminar Room (ZNI 112)  
Keck School of Medicine at **USC**  
1501 San Pablo Street  
Los Angeles, CA 90033

### Speakers

- **Christer Betsholtz** MD, PhD, *Professor of Immunology, Genetics & Pathology, Uppsala University, Sweden*
- **David Brody** MD, PhD, *Associate Professor, Neurology, Washington University School of Medicine in St. Louis*
- **Jeffrey Cummings** MD, *Director, Cleveland Clinic Lou Ruvo Center for Brain Health,*
- **David M. Holtzman** MD, *Professor & Chairman of Neurology, Washington University School of Medicine in St. Louis*
- **Costantino Iadecola** MD, *Director, Brain & Mind Research Institute; Professor of Neurology, Weill Cornell Medical College, NY*
- **John Ringman** MD, *Professor of Clinical Neurology, USC*
- **Margaret E. Ross** MD, PhD, *Nathan Cummings Professor in Neurology, Weill Cornell Medical College, NY*
- **Philip Scheltens** MD, PhD, *Professor & Director, Alzheimer Center, Vrije Universiteit Medical Center, Amsterdam*
- **Sangram Sisodia** PhD, *Director, Center for Molecular Neurobiology; Professor of Neurobiology, University of Chicago*
- **Rudolph Tanzi** PhD, *Director & Vice-Chair, MassGeneral Inst for Neurodegenerative Disease; Prof of Neurology, Harvard Univ*
- **Robert Vassar** PhD, *Professor, Northwestern University Feinberg School of Medicine*
- **Berislav V. Zlokovic** MD, PhD, *Director, Zilkha Neurogenetic Institute; Professor & Chair, Physiology & Biophysics, USC*

### Session Chairs

- **Maria Carrillo** PhD, *Vice President, Medical & Scientific Relations, Alzheimer's Association*
- **Roderick Corriveau** PhD, *Program Director, National Institute for Neurological Disorders & Stroke, NIH*

*Symposium made possible by a generous gift from Eva and Marc Stern*

For more information, please email Emily Chu at [Emily.Chu@med.usc.edu](mailto:Emily.Chu@med.usc.edu)

*Image Credit (L to R): Zlokovic Lab and Tanzi Lab*